

# Vital Signs

Quality of Life Report for Madison County, AL



Presented by  
**Community Foundation**  
of Greater Huntsville



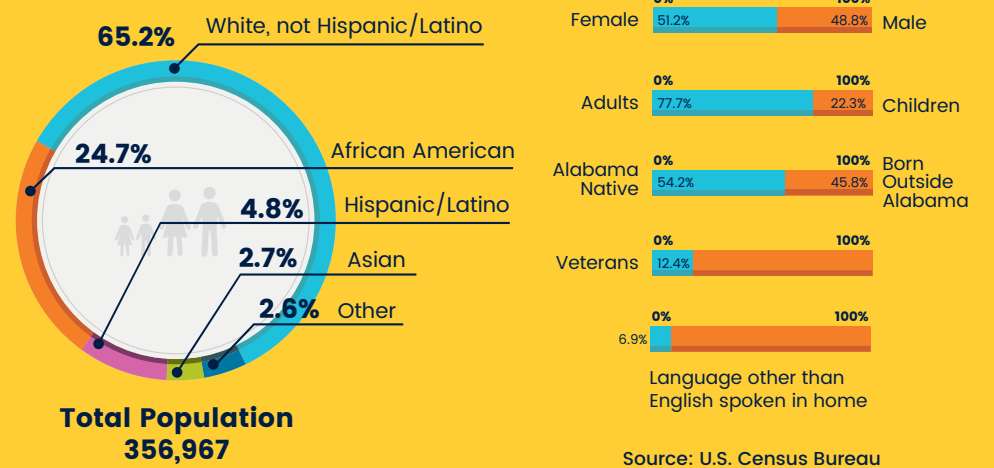
## Basic Needs



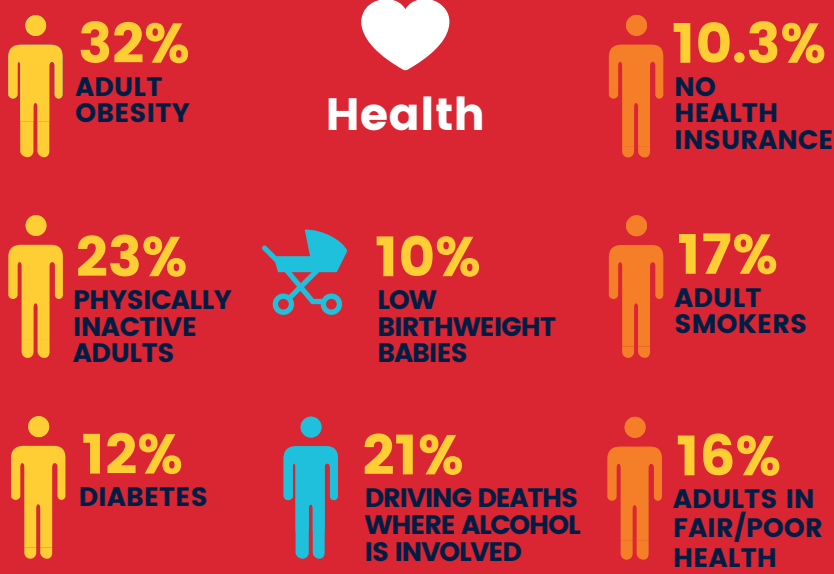
Sources: Robert Wood Johnson Foundation County Health Rankings; U.S. Census Bureau; U.S. Department of Transportation



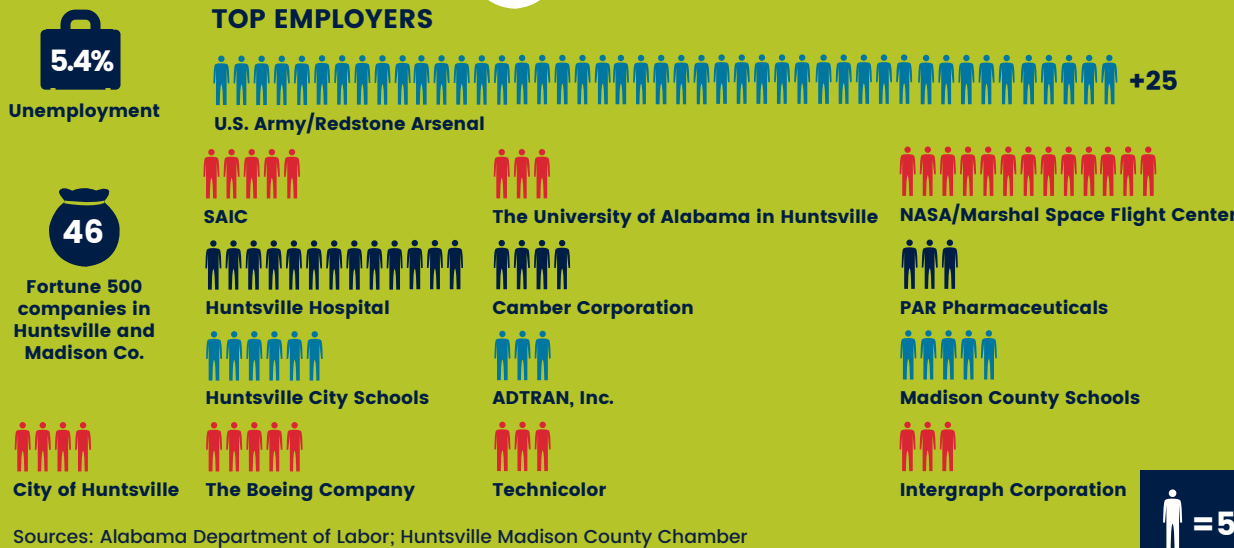
## Neighborhoods & Community



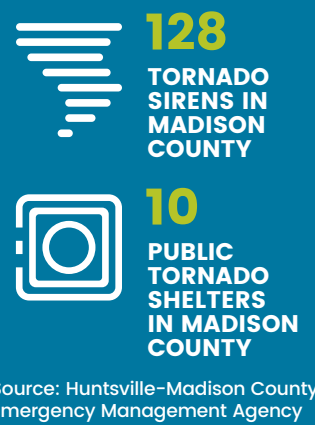
## Lifestyle



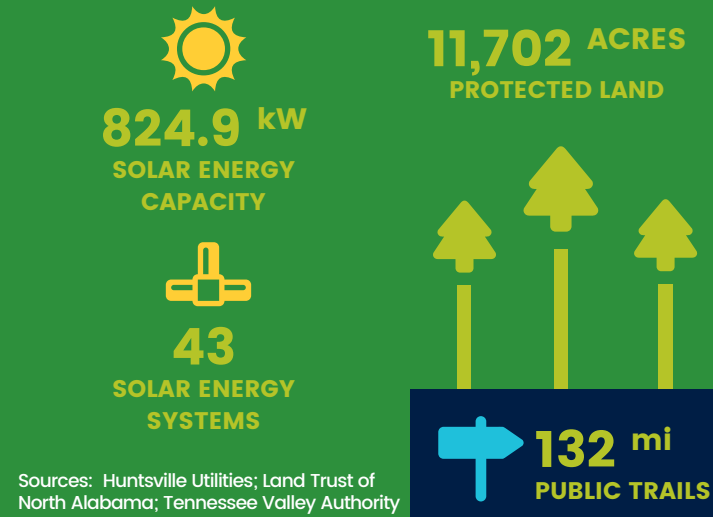
## Economy



## Emergency Relief

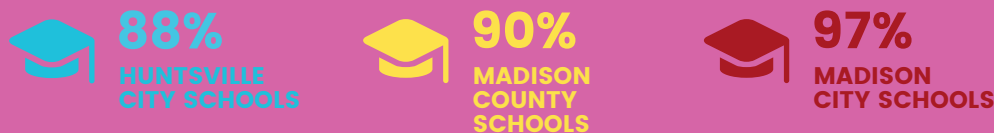


## Environment

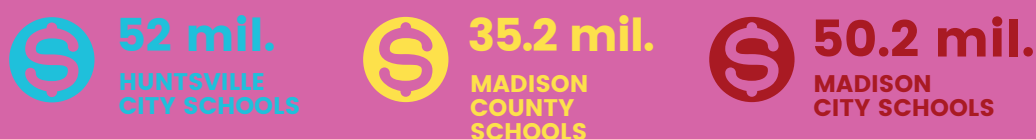


## Education

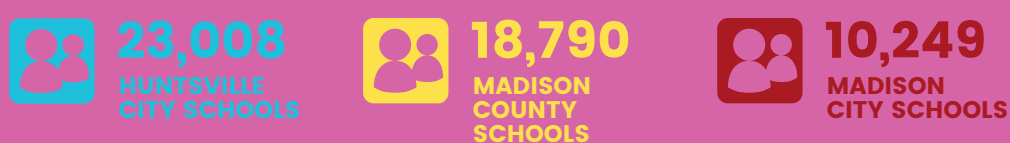
### GRADUATION RATES



### SCHOLARSHIPS AWARDED

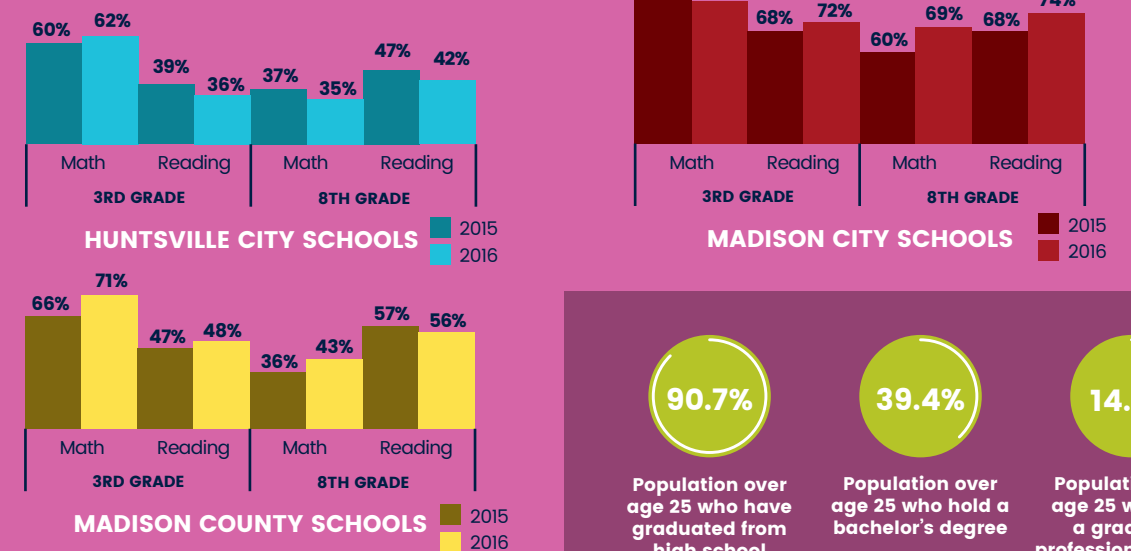


### ENROLLMENT



Sources: Alabama Department of Education; Huntsville City Schools; Madison City Schools; Madison County Schools; U.S. Census Bureau

### ASPIRE PROFICIENCY SCORES



Our community gets it, and we have for a long, long time. Leaders from NASA, Redstone Arsenal, City and County Governments, Education, Healthcare, and our Chamber partner with our community business leaders to help define our direction, build on our strengths, and look forward towards opportunity. Individual viewpoints are synced, the steps to make those opportunities reality are defined, and our incredibly talented leadership team goes to work. We have accomplished this year after year, decade after decade, turning opportunity into jobs filled by folks like you and me.

**Paul Finley**  
Mayor  
City of Madison

with

850

= 50

PROGRAM PARTICIPANTS



In Community Foundation of Greater Huntsville programs including Summit on Philanthropy, Nonprofit University, Philanthropic Advisors Network, and Corporate Giving Network.

donations to improve the quality of life in our community

\$3,134,511

\$2,478,283

grants to 201 nonprofit organizations

of those grant dollars remaining in Madison County

with 79.76%



117

Individual & Family GRANTMAKERS

+



9

Corporate GRANTMAKERS

=



518 GRANTS

## 2016 Annual Report



P.O. Box 332 | Huntsville, AL 35804

\$21.3 million assets raised

with \$8.4 million total grants distributed to 414 nonprofit organizations since 2009

### Board of Directors

- |                                 |                    |
|---------------------------------|--------------------|
| Joe Alexander   Chair           | Ginger Harper      |
| Pam Hudson, M.D.   Vice-Chair   | Chris Hinson, J.D. |
| James Gilbert, M.D.   Secretary | Mike Lowe          |
| Chris Russell   Treasurer       | Gayle Milton       |
| Cynthia Almodóvar               | Stuart Obermann    |
| Bobby Bradley                   | Bill Roark         |
| John Burnett                    | Kevin Webber       |
| Mike DeMaioribus                | Frank Williams     |
| Dana Gillis                     |                    |

256.535.2065 | info@communityfoundationhsv.org  
www.communityfoundationhsv.org

Sincerely,  
Stuart Obermann  
CEO/President

We are proud to present the 2017 edition of *Vital Signs* – our annual report to the community about the many factors that influence our Quality of Life in the Greater Huntsville area. The Community Foundation takes a holistic view of Quality of Life, and we work with our donors, grantees and community leaders to identify those areas where we can and should be doing a better job. Our mission is to improve the Quality of Life in our community through philanthropy – and to achieve this, we encourage corporations, families and individual donors to think strategically about their charitable giving. We utilize the concept of Collective Impact in our own grantmaking, and leverage our grants with other funders to tackle challenging issues that are often too large for any one donor to take on. We also encourage collaboration among nonprofit and government agencies so that these programs can have the greatest positive impact on our community, and we utilize measurable outcomes to ensure we're getting a solid return on our donors' investments.

Working together, and strategically, we can move the needle on many of these Vital Signs metrics and improve our Quality of Life in a meaningful and permanent way. There are many ways to give back to our community, and we'd love to talk with you about how you can maximize your impact through strategic philanthropy. Please give us a call or visit our website for more information.



DEAR FRIENDS –

\*This amount includes grants from managed funds

\$1,677,197

\$2,639,445

Program Services\*

\$1,828,148

\$2,786,859

Functional Expenses\*

\$2,936,787

\$3,508,827

Support and Revenue

Statement of Activities

\$11,918,621

\$12,898,961

Total Liabilities and Net Assets

Statement of Financial Position

### Financial Highlights

YE 12/31/16  
YE 12/31/15

Total Net Assets, Ending

\$11,249,743

\$10,527,775

Statement of Activities